

Recommended Installation Procedure For Polymer Concrete & FRP Enclosures



Notice: All installation activities should be done in accordance with all local, state, and federal Occupational Safety and Health requirements and any other applicable laws or standards.

1. Site Selection & Safety

- Confirm no underground utilities within excavation area (call 8-1-1 or local equivalent).
- Verify enclosure load rating aligns with expected traffic (pedestrian, medium duty, traffic rated).
- Select a level location or ensure proper drainage if grading is necessary.

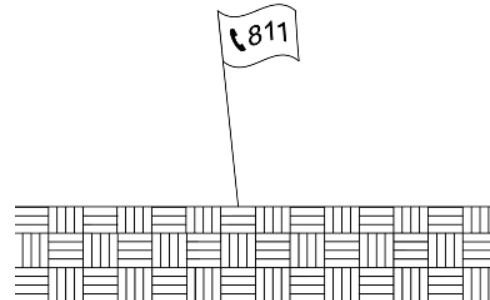


Figure 1: Verify Existing Utilities

2. Excavation

- Excavate a hole approximately 12–18 inches wider and longer, and 6–8 inches deeper than the enclosure.
- Ensure the bottom is level and free of debris or loose soil.

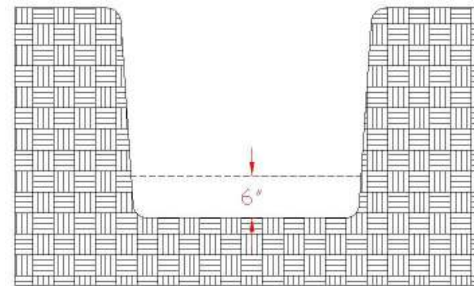


Figure 2: Excavate 6" on All Sides

3. Base Preparation

- Place 6 inches of clean, angular crushed stone ($\frac{1}{4}$ "– $\frac{3}{4}$ "), free of organic material.
- Lightly tamp the base to create a stable, level surface. Avoid heavy mechanical equipment.

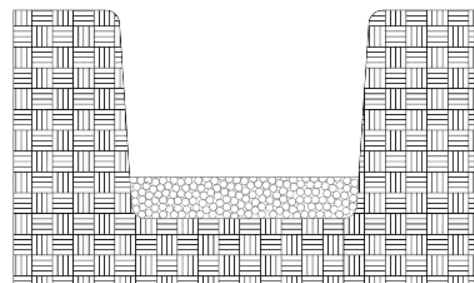


Figure 3: Place 6" of Stone Base

4. Placement & Leveling

- Remove enclosure cover before lowering.
- Carefully set the enclosure onto the stone bed; adjust it so the top edge is flush with final ground grade and oriented appropriately.

5. Lifting & Bracing (When Required)

- For large or traffic-rated boxes, use proper lifting straps or equipment, never by the cover.
- If compaction is expected to exceed 95% or if heavy machinery will be used nearby, place internal bracing (e.g., 2×4 wood) at mid-depth to support sidewalls.

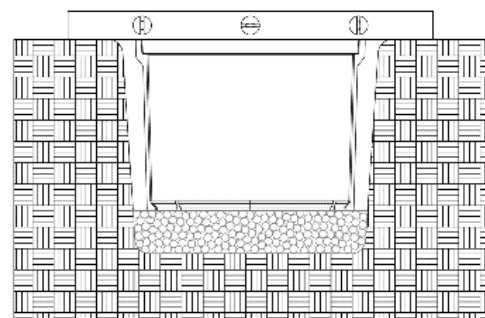


Figure 4: Place Box Level and Flush

6. Backfilling

- Begin infilling around the enclosure in 6-inch layers, tamping each layer manually.
- Ensure fill works into any exterior ribs or voids for uniform support.

Recommended Installation Procedure For Polymer Concrete & FRP Enclosures



7. Load-Specific Finishing

- For pedestrian or greenbelt areas: Finish with compacted backfill graded to site.
- For sidewalks or occasional vehicle traffic: Install a 6-inch concrete collar around the top perimeter for structural support.
- If exposed to nondeliberate vehicular traffic: Use a reinforced concrete collar as needed, consistent with enclosure load rating and local codes.

8. Final Adjustments & Cleanup

- Ensure the enclosure cover is securely reinstalled, seated flush, and bolted if necessary.
- Grade final surface to slope away from enclosure to facilitate drainage.
- Remove tools and debris from the site.

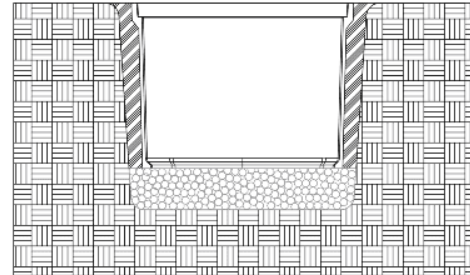
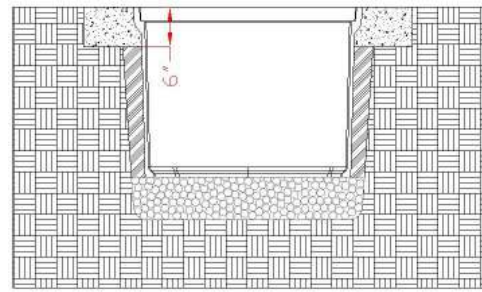


Figure 5: Backfill and Tamp



**Figure 6: Install 6" Concrete Collar if
Exposed to Nondeliberate Traffic**